



THE WESTWOOD ACADEMY

School Uniform – September 2017 &  
Uniform Guidelines & Advice



**Blazers will be compulsory for all Key Stage 3 pupils from 6<sup>th</sup> September 2016**

**Compulsory for Key Stage 3 & Year 10 from September 2017**

**Compulsory for all pupils from September 2018**

**BOYS UNIFORM**

<b>Shirt:</b>	Plain white cotton shirt with a top button that fastens (no polo shirts) short or long sleeves acceptable
<b>Ties:</b>	Silver grey and purple stripe, with College (house) colour, ties must be worn at an appropriate length and a minimum of three complete purple stripes must be visible.
<b>Knitwear:</b>	(either jumper or sleeveless jumper) Key Stage 3 (Years 7, 8 & 9) – Purple with silver grey V neck stripe Key Stage 4 (Years 10 & 11) – Mid Grey with purple V neck stripe
<b>Trousers:</b>	Plain black school trousers, no denim or fashion trousers
<b>Socks:</b>	Plain black
<b>Shoes:</b>	Plain black school shoes – no brands or logos
<b>Coats:</b>	Winter coats or anoraks – optional. Plain and dark in colour (no denim, no sweatshirts or hooded tops)

**GIRLS UNIFORM**

<b>Shirt/blouse:</b>	Plain white cotton shirt with a top button that fastens (no polo shirts or fashion blouses), short or long sleeves acceptable
<b>Ties:</b>	Silver grey and purple stripe, with house colour, ties must be worn at an appropriate length and a minimum of three complete purple stripes must be visible.
<b>Knitwear:</b>	(cardigan, jumper or sleeveless jumper) Key Stage 3 (Years 7, 8 & 9) – Purple with mid grey V neck stripe / Key Stage 4 (Years 10 & 11) – Mid Grey with purple V neck stripe
<b>Skirts:</b>	Skirts: Years 7 - 11- Pleated purple, grey and black tartan skirt or Trousers: Please note from September 2015 the tartan skirt is now the only skirt option for <u>all</u> girls. All skirts must be no more than 2cm above knee height in length.
<b>Trousers</b>	Years 7 – 11 plain black school trousers only – (no denim or fashion trousers)
<b>Hairbands</b>	Must be dark purple, grey or black
<b>Tights:</b>	Dark purple, grey or black, plain block colour only, no fashion colours or designs, no sheer tights
<b>Shoes:</b>	Plain black school shoes – no brands or logos, no heels above 2cm
<b>Coats:</b>	Winter coats or anoraks – optional. Plain and dark in colour (no denim, no sweatshirts or hooded tops)

**Cultural Uniform:** We also offer parents the option of a cultural uniform for girls, this uniform will consist of a purple tunic, jubbah or mock wrap dress with a black headscarf or hijab. Please contact the school office for specific details.

**BLAZERS (with complimentary enamel Westwood badge)**  
**ARE BEING INTRODUCED FOR YEARS 7 – 9 as from 6<sup>th</sup> September 2016**

## **PE Kit**

### GIRLS

Plain black skirt – with logo

Purple polo shirt - with logo

Sports Trainers only (no pumps) predominantly black or white

Standard one-piece swimming costume (dark colour, e.g. blue, black, dark grey, dark purple)

Black & Purple school football style socks - with logo

Plus (Optional but advisable for cold weather) for Boys & Girls PE

Black & Purple Hooded top – with logo / Black track suit bottoms – with logo

### BOYS:

Plain black shorts - with logo

Purple polo shirt – with logo

Sports Trainers only (no pumps) predominantly black or white

Swimming trunks (dark colour, e.g. blue, black, dark grey, dark purple)

Football boots

Rugby shirt – available autumn 2016

Black & Purple school football style socks - with logo

Plus (Optional but advisable for cold weather) for Boys & Girls PE

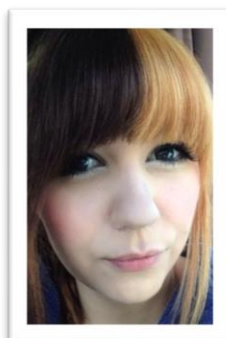
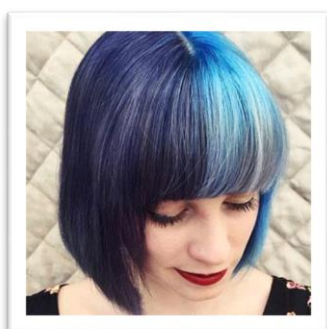
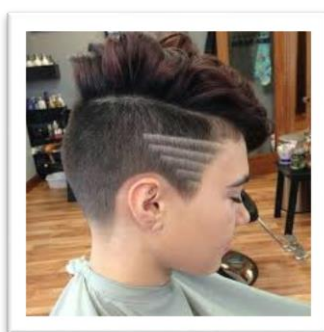
Black & Purple Hooded top – with logo / Black track suit bottoms – with logo

**Jewellery – a single stud only in each earlobe – no hoops or long earrings, no bracelets, necklaces etc.**

**Hairstyles** can be a contentious issue and the definition of an acceptable hairstyle can sometimes be complex, our policy is therefore that extremes of any hairstyle are not allowed for school.

To clarify this: Short hair is not considered extreme – unless shaved below a number '2': long hair for boys (and girls) is perfectly acceptable although it must be acknowledged that long hair will need to be tied back for practical and safety reasons in some lessons; any form of decoration cut into the hair, or any change from a naturally acceptable hair colour is not allowed.

For example; all of the styles depicted below would not be allowed.



We do not allow the following;

- Dyed or unnaturally highlighted hair
- Lines or patterns shaved into the hair or hair shaved below a number '2'
- Layered hair that is not subtly blended with natural colours
- Any other extreme hairstyle – e.g. Mohican.

### **School Shoes**

All schools shoes must be black and appropriate for school, trainers or trainer style shoes will not be acceptable. Shoes must not have any logo and must not be canvas or cloth. They should be leather or faux leather, they must be sturdy, safe and suitable for school. If they cannot be worn with a formal suit then they are not acceptable as school compliant. Girls shoes must not have a heel height above 2cm.

Acceptable School Shoes



Unacceptable School Shoes

